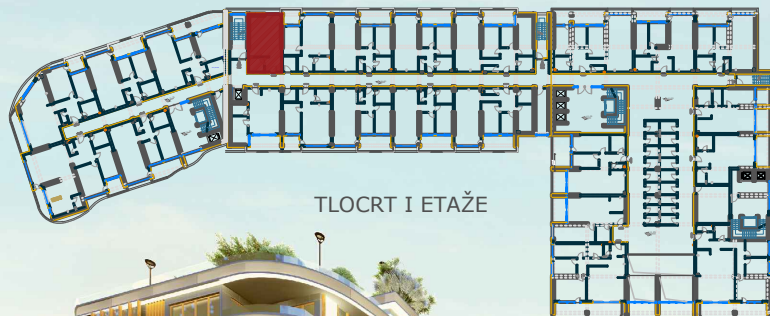


TLOCRT STANA 1:100



TLOCRT I ETAŽE

Stan 9, Sprat I, Lamela B

| r/b | naziv prostorije | podna obloga | pov. m ² |
|-----|-------------------------------|--------------|---------------------|
| 1. | Hodnik | parket | 5,90 |
| 2. | Dnevni boravak sa trpezarijom | parket | 26,45 |
| 3. | Kuhinja | keramika | 5,65 |
| 4. | Kupatilo | keramika | 5,10 |
| | UKUPNO: | | 43.10 |